

# Model 8042 TELEHANDLER



**SKYTRAK**

## Performance

<b>Rated Capacity</b>	8,000 lb (3,629 kg)
<b>Maximum Lift Height</b>	41 ft 11 in. (12.7 m)
<b>Frame Leveling</b>	10 degrees
<b>Lift Speed (boom retracted)</b>	Up: 15 sec Down: 12.5 sec
<b>Boom Speed</b>	Extend: 14.5 sec Retract: 14 sec
<b>Travel Speed Forward</b>	4-Speed: 20 mph (32 kmph)
<b>Drawbar Pull</b>	24,000 lb (10,886 kg)
<b>Operating Weight With Carriage and Forks</b>	26,230 lb (11,898 kg)

## Standard Specifications

<b>Engine</b>	
Make and Model	Cummins QSB4.5T Turbo Diesel
Fuel	Diesel
Cycles	4
No. of Cylinders	4
Displacement	274 cu in. (4.5 L)
Torque Rating	305 lb ft (414 Nm)
@ 1,500 rpm	
Rated Speed	2,500 rpm
Max. Gross BHP	110 hp (82 kW)
Fuel Tank	35 gal (132 L)
<b>Engine Filters</b>	
Two-stage dry air cleaner — centrifugal pre-cleaner with continuous dust ejector and replaceable dry filter element.	
Replaceable spin-on fuel filter. Full-flow replaceable spin-on engine oil filter.	
<b>Electrical System</b>	
Voltage	12V
Alternator	95 amp
Battery	Two batteries, each with 850 cold cranking amps at 0°F
<b>Transmission</b>	
Modulated powershift.	
4-speed forward and 3-speed reverse.	

## Axles

Full-time planetary 4-wheel drive.  
Oscillating rear axle with Stabil-Trak System.

## Service Brakes

Hydraulically actuated inboard wet disc brakes.

## Parking Brakes

Emergency brake with transmission declutch feature.

## Tires

Air Filled 15.5 x 25, 12 ply

## Cab

Certified ROPS/FOPS structure.  
Adjustable suspension seat with retractable seat belt.

Rear view mirrors.

Lockable covers.

## Steering 4-Wheel

Power steering.  
Operator selectable 4-wheel circle, 4-wheel crab, 2-wheel front.

## Instruments

Instrument cluster with gauges and warning lights.

## Controls

Dual joystick controls.  
Proportional frame tilt, fork tilt and auxiliary hydraulics.

## Hydraulic System-Implement

Piston pump.  
60 gal (225 L) system capacity.  
Variable flow, load sensitive hydraulic system.

Load holding valves on frame level, stabilizer, attachment tilt, extend and lift cylinders.

## Auxiliary Hydraulics

Used for all attachments equipped with cylinders or other hydraulic components. Consists of valves, controls and hydraulic lines.

## Accessories & Options

### Enclosed Cab

### Work Lights

### Road Lights

### Rotating Beacon

### Fenders

### Tires:

Foam Filled  
Rock  
Solid

## Attachments

### Standard Carriage

50 in. (1.3 m) or 60 in. (1.5 m) or 72 in. (1.8 m)

### Side-Tilt Carriage

50 in. (1.3 m) or 60 in. (1.5 m) or 72 in. (1.8 m)

### Swing Carriage

72 in. (1.8 m); 90 degrees

### Sheet Material Adapter

### Tower

8 ft (2.4 m); 50 in. (1.3 m) Standard

### Pallet Forks

2.36 x 4 x 48 in. (60 mm x 102 mm x 1.2 m)

2.36 x 5 x 48 in. (60 mm x 127 mm x 1.2 m)

2.00 x 6 x 72 in. (51 mm x 152 mm x 1.8 m)

### Lumber Forks

1.75 x 7 x 60 in. (44 mm x 178 mm x 1.5 m)

2.36 x 6 x 60 in. (60 mm x 152 mm x 1.5 m)

### Cubing Forks

2 x 2 x 48 in. (51 mm x 51 mm x 1.2 m)

### Material Bucket

72 in. (1.8 m), 1.0 cu yd (0.76 m<sup>3</sup>)

96 in. (2.4 m), 1.5 cu yd (1.15 m<sup>3</sup>)

102 in. (2.6 m), 2.0 cu yd (1.53 m<sup>3</sup>)

### Grapple Bucket

96 in. (2.4 m), 1.75 cu yd (1.34 m<sup>3</sup>)

### Truss Boom

12 ft (3.7 m), 2,000 lb (907 kg) capacity

15 ft (4.6 m), 2,000 lb (907 kg) capacity

12 ft (3.7 m) with winch,

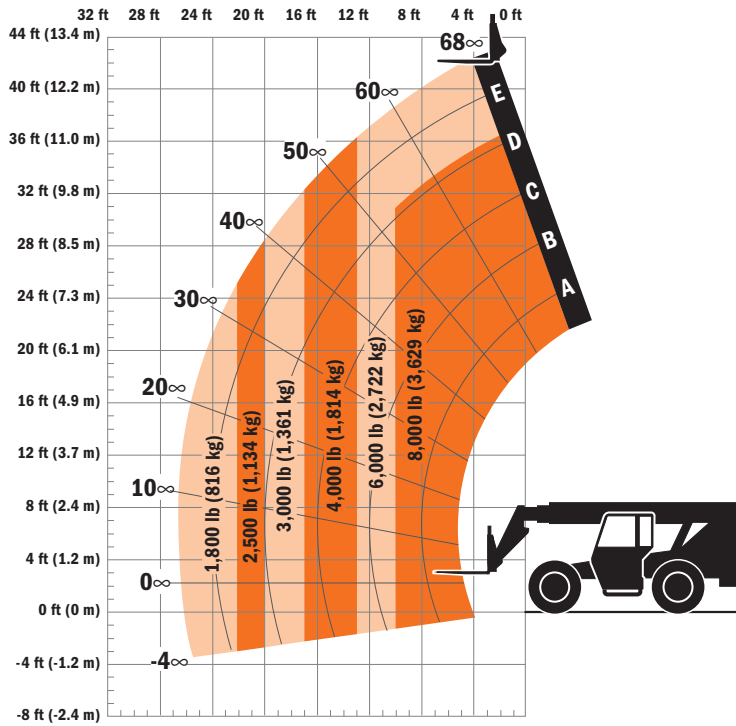
2,000 lb (907 kg) capacity

### Fork Mounted Work Platform

8 ft (2.4 m), 1,000 lb (455 kg) capacity

### Lifting Hook

## Model 8042 TELEHANDLER



### Dimensions

Length (less forks)	225.2 in. (5.72 m)
Width	98.2 in. (2.49 m)
Height	99.4 in. (2.52 m)
Wheelbase	119.5 in. (3.03 m)
Ground Clearance	17.3 in. (439 mm)
Outside Turning Radius	156 in. (3.96 m)
Max. Reach from Front Tires to 24 in. (609 mm) Load Center	26.6 ft (8.10 m)

### IMPORTANT

Rated lift capacities shown are with machine equipped with carriage and pallet forks. The machine must be level on a firm surface with undamaged, properly inflated tires. Machine specifications and stability are based on rated lift capacities at specific boom angles and boom lengths. (If specifications are critical, the proposed application should be discussed with your dealer.)

DO NOT exceed rated lift capacity loads, as unstable and dangerous machine conditions will result.

DO NOT tip the machine forward to determine the allowable load.

Use only JLG approved attachments with proper material handler model/attachment load capacity charts displayed in the operator's cab. OSHA requires all rough terrain forklift operators be trained according to OSHA 29 CFR 1910.178 (1).



Due to continuous product improvements, JLG Industries reserves the right to make specification and/or equipment changes without prior notification. This machine meets or exceeds ASME B56.6-2005 as originally manufactured for intended applications.

Form No.: SS-ST8042-0104-15M  
Part No.: 3132400  
R010904  
Printed in USA

**JLG Industries, Inc.**  
1 JLG Drive  
McConnellsburg, PA 17233-9533  
Telephone 717-485-5161  
Toll-free in US 877-JLG-LIFT  
Fax 717-485-6417  
[www.jlg.com](http://www.jlg.com)

An Oshkosh Corporation Company